



Bartlams

70 Woodland Road, Finchfield, WV3 8AW

Offers Around £299,950

****NO UPWARD CHAIN** Extended three-bedroom traditional-style semi-detached family home in a consistently popular neighbourhood. Extended ground floor accommodation neatly presented with a fitted breakfast/dining kitchen, utility and downstairs W.C. Through Living Room with bay window to the front. Three first-floor bedrooms and a family bathroom. Gas central heating. Double Glazing. Garage. Off-road parking the fore. Large rear garden backing onto 'The Coppice' split into sections for entertaining.**

- IDEAL FAMILY HOME IN POPULAR LOCATION.
 - EXTENDED TO THE REAR.
 - THROUGH LIVING/DINING ROOM.
 - FITTED KITCHEN AND UTILITY.
- DOUBLE GLAZING AND CENTRAL HEATING.
 - DOWNSTAIRS W.C..
 - THREE BEDROOMS.
- FAMILY BATHROOM WITH SEPRATE SHOWER CUBICLE.

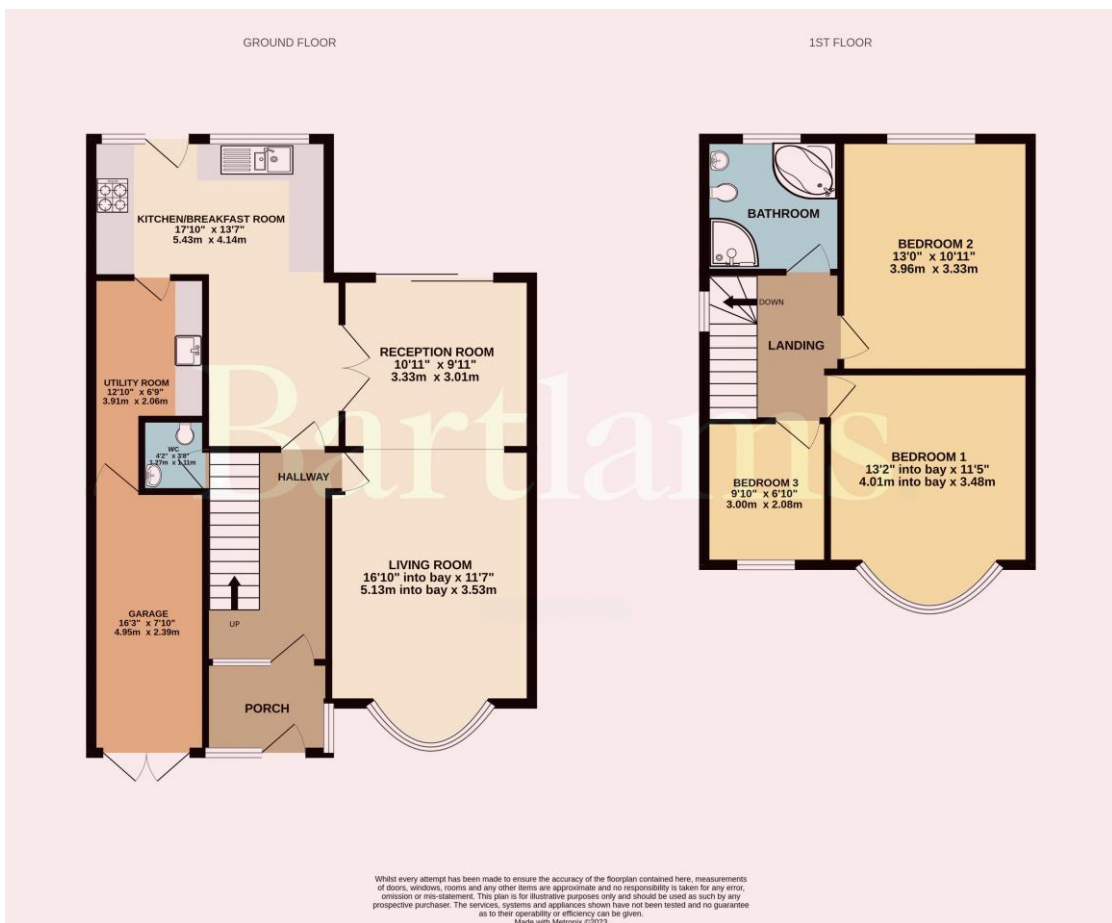


Freehold
COUNCIL TAX BAND - C
EPC RATING - E

NOTICE: These particulars, although believed to be correct, do not constitute any part of an offer or contract. All statements contained in these particulars as to this property are made without responsibility and are not to be relied upon as statements or representations of warranty whatsoever in relation to property. Any intending purchaser must satisfy themselves by inspection or otherwise as to the correctness each of the statements contained in these particulars. All measurements are approximate and for illustrative purposes only. Photographs are produced for general information and it must not be inferred that any item shown is included in the sale.

DISCLOSURE: As a professional Estate Agency our clients employ us to look after their best interests. This includes providing them with full details of offers made to purchase their property. To ensure our obligations to our clients are met we need to check the status of all potential purchasers. If you make an offer on this property we will ask a member of The Finance Family to contact you to verify your status. They are a leading firm of Independent Financial Advisers and Mortgage Brokers. Should they transact any business resulting from our introduction then we may receive a commission.

Bartlams



PLEASE SIGN BELOW TO AGREE THAT THE DETAILS ARE ACCURATE TO THE BEST OF YOUR KNOWLEDGE

SIGNED:

DATE:

24 High Street TETTENHALL Wolverhampton West Midlands WV6 8QT

01902 759888

tettenhallsales@bartlams.co.uk

www.bartlams.co.uk



